



JUNE 15
BOARD MEETING
YEAR END UPDATE



GIFTED AND TALENTED

The **New Jersey Department of Education** defines giftedness in N.J.A.C. 6A:8, STANDARDS AND ASSESSMENT.

“Gifted and talented students” means students who possess or demonstrate high levels of ability in one or more content areas when ***compared to their chronological peers in the local school district*** and who require modifications of their educational program if they are to achieve in accordance with their capabilities.

According to the **National Association for Gifted Children** (NAGC) “Gifted individuals are those who demonstrate outstanding levels of aptitude (defined as exceptional ability to reason and learn) or competence (documented performance or achievement in ***top 10% or rarer***) in one or more domains.”

The term gifted recognizes exceptionality in aptitude or achievement that requires appropriately differentiated services in order for students to develop to their potential.

HIGH ACHIEVING VS GIFTED

High achieving

Knows the answers

Has good ideas

Commits time and effort to learning

Answers questions

Is a top student

Understands ideas

Listens with interest

Is pleased with their own learning

High achievement, high growth

Gifted

Asks the questions

Has original ideas

Performs with ease

Offers detailed and unique responses

Is intense

Manipulates information

Shows strong feelings and opinions

Is highly self-critical

High achievement, low growth

(Winebrenner, 2001)

WHAT WE ARE DOING

Identification for Sept 2022

- ❑ 9th graders will hold gifted and talented status from the middle school
- ❑ 10th through 12th grade students will be identified through a multiple measure rubric.
- ❑ Introduction to new categories of identification

Ongoing Professional Learning

- ❑ Professional development for teachers
- ❑ Administrator training on look-fors in classroom and student characteristics
- ❑ Providing “entrance ramps” for students after the start of the school year.

Re-evaluation will be in Winter 2022/23 to include multiple measures

District Benchmark Exams

ELA

2021-22 Two through Linkit in grades 9-10

Next year- We will be using the Pre-AP 9 and 10 benchmarks “Learning Checkpoints” throughout the curriculum and uploading results into Linkit

Mathematics

2021- 2022 One Benchmark exam using MAPS software

Next year moving forward with MAPS program in Algebra 1, Geometry and Algebra 2

CURRICULUM WORK

ELA

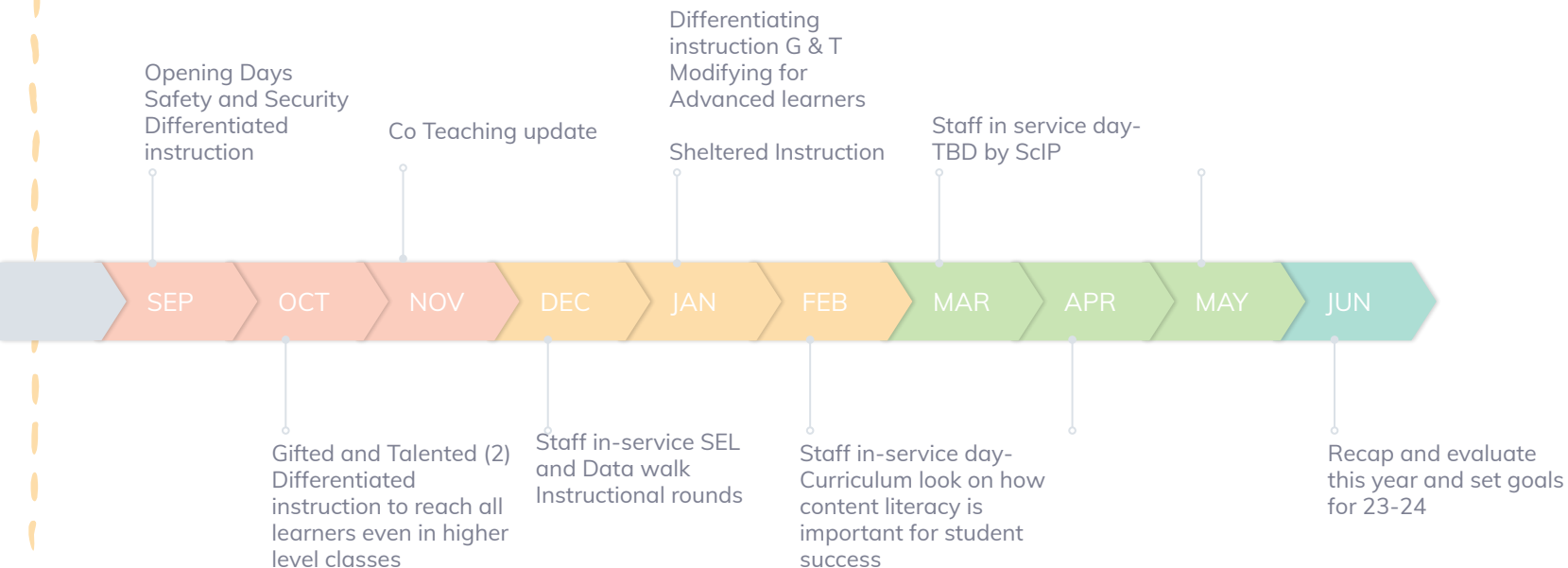
Pre- AP training for teachers from all levels began on June 1st. Teachers will continue to work over summer to make edits to current to curriculum to add in new strategies and benchmarks throughout the year to align to Pre-AP in grades 9 and 10.

CURRICULUM WORK

Mathematics

Teachers will begin to attend differentiated instructional workshops in June and will continue throughout next school year. This is to assist teachers with modifying instruction with the collapsing of the concepts level mathematics class.

PD LAYOUT FOR 2022-23 SCHOOL YEAR



End of school year by course report failures

	Possible Year Failures	Actual total failures	Actual total failures
	2022	2021	2019
English 1	20	29	28
English 2	21	22	18
English 3	17	27	15
English 4	10	11	4
Global Studies	15	19	27
US 1	0	10	7
US 2	0	2	7
ELL US 1	0	3	2
ELL US 2	0	2	
ELL Global	0	2	5

End of school year by course report failures

	Possible Year Failures	Actual total failures	Actual total failures
	2022	2021	2019
Biology 9	25	37 (including exploratory science)	38 (including exploratory science)
Chemistry	19	19	22
ELL Chem	1	4	1
Algebra 1	19	47	26
Geometry	22	28	14
Algebra 2	17	33	19
ELL Algebra 1	1	3	0
ELL Geometry	0	2	0

PERCENT OF STUDENTS EARNING A GRADE OF B OR BETTER

Students 80 or higher			
	2021-2022	2020-2021	2019-2020
English	70.50%	71.30%	70.60%
Math	64.52%	64.60%	61.50%
History	75.24%	62.80%	65.50%
Science	76.91%	59.70%	59.40%

NJ STATE REPORT CARD DATA- 11TH AND 12TH GRADE ONLY

	4 Year Grad Rate %	% AP and IB	% Dual Enrollment
2018-19	92.1	63.8	30.7
2019-20	94.3	65.1	33.7
2020-21	95.5	61.7	27.6
2021- 22	Estimated 96.8	55.8	23.3
2022-23 (projected)	-	65.0	28.7

ELA Progress- All In	2021-22	2022-23
11th and 12 Graders enrolled in ELA AP/Dual Enrollment/IB	40.7%	47.5%

AP EXAMS

- 318 students are taking 509 exams.
- Exams started May 2nd and will continue until May 20th.

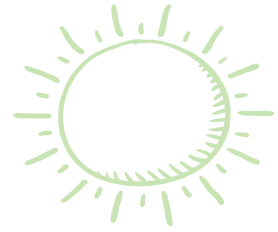
IB EXAMS

- 178 students are taking 259 exams.
- Exams started April 30th and will continue until May 25th.
- 10 student are on track for diploma

SUMMER ENRICHMENT

- Accelerated World Language
- College Essay & Application Bootcamp
- ELA Enrichment for College Level Courses
- Math and Science Enrichment for College level Courses
- Summer Slam

AUGUST 2022



FRESHMAN ORIENTATION 8/24

9TH GRADE MENTOR TRAINING LATE AUGUST

NEW TEACHER TRAINING 8/29-8/30

CHROMEBOOK PICKUP FOR GRADE 9 - 8/29

